



Task Title: Calculate the Area of an Irregular Room

OALCF Cover Sheet – Learner Copy

Learner Name: _____

Date Started: _____

Date Completed: _____

Successful Completion: Yes No

Goal Path: Employment Apprenticeship

Secondary School Post Secondary Independence

Task Description: The learner will use a floor plan of an irregular room to determine if specific pieces of furniture will fit.

Main Competency/Task Group/Level Indicator:

- Understand and Use Numbers/Use measures/C3.3

Materials Required:

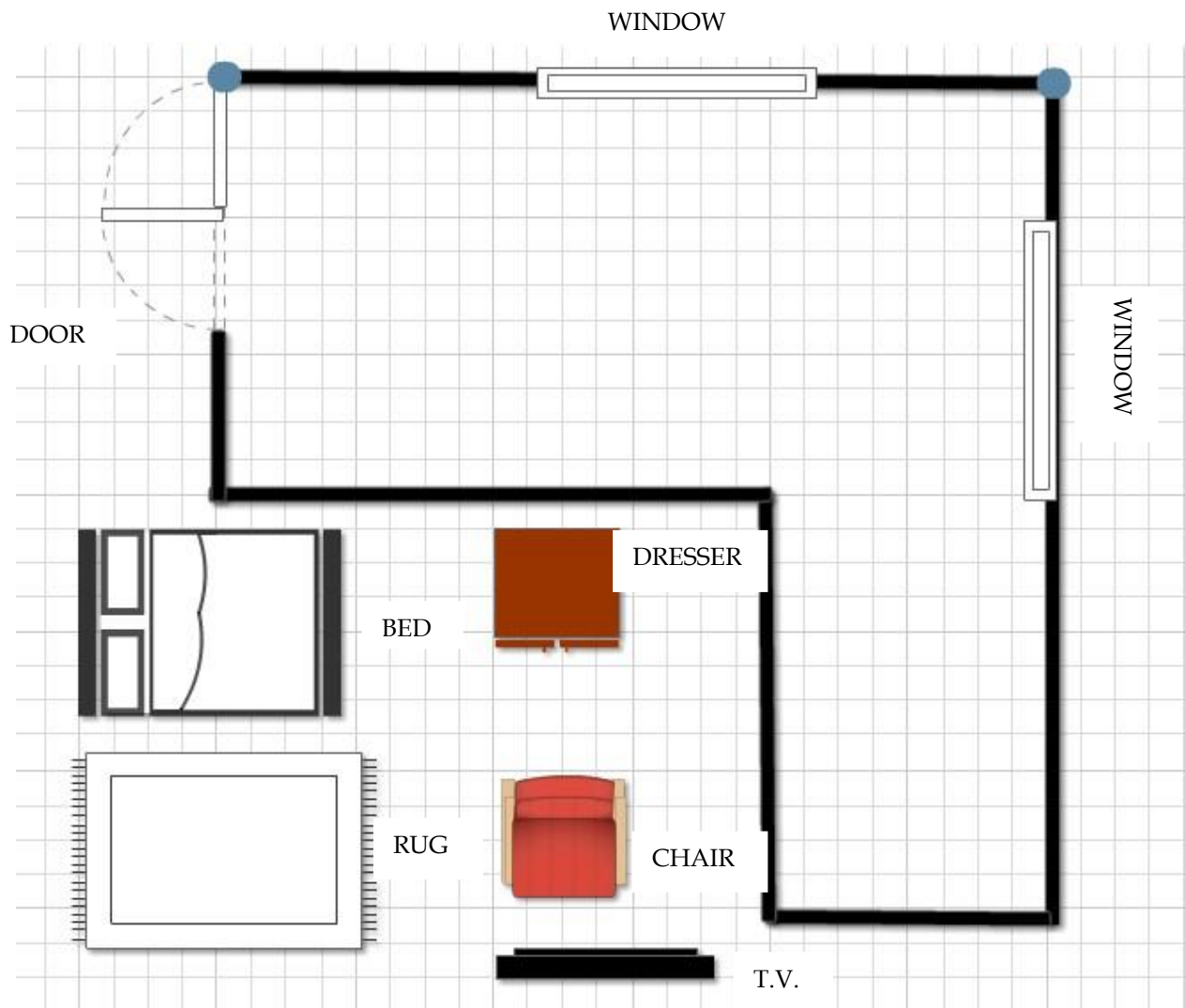
- Pen/pencil and paper and/or digital device
- Calculator or digital device with calculator function
- Ruler

Learner Information

Floor plans are often used to determine where to place furniture in a room.

Scan the "Bedroom Floor Plan". In the floor plan each small square represents 1 foot squared (1 foot x 1 foot x 1 foot x 1 foot).

Bedroom Floor Plan



Work Sheet

Task 1: Calculate in feet the perimeter of the bedroom.

Answer:

Task 2: Calculate in feet the total area of the bedroom.

Answer:

Task 3: Calculate in feet the total approximate amount of the room taken up by windows.

Answer:

Task 4: Use the floor plan to record the placement you've decided on for each piece of furniture shown.

Answer: No written response required here.

Task completed: Yes:
