

OALCF Tasks for the Apprenticeship Goal Path: Prepared for the Project, *Developing Best Practices for Increasing, Supporting and Retaining Apprentices in Northern Ontario (2014)*

OALCF Task Cover Sheet

Task Title: Interpret and Create Drawings

Learner Name:	
Date Started:	Date Completed:
Successful Completion: Yes ___ No ___	
Goal Path: Employment <input checked="" type="checkbox"/> Apprenticeship <input checked="" type="checkbox"/> Secondary School ___ Post Secondary ___ Independence ___	
Task Description: Electricians interpret, modify and create schematic drawings using standardized icons and legends. They use the drawings to plan tasks and determine materials needed for a job.	
Competency: A: Find and Use information B: Communicate Ideas and Information C: Understand and Use Numbers	Task Group(s): A2: Interpret documents B2: Write continuous text B3: Complete and create documents
Level Indicators: A2.2: Interpret simple documents to locate and connect information A2.3: Interpret somewhat complex documents to connect, evaluate and integrate information B2.1: Write brief texts to convey simple ideas and factual information B3.2a: Use layout to determine where to make entries in simple documents B3.3a: Decide what, where and how to enter information in somewhat complex documents	
Performance Descriptors: see chart on last page	
Materials Required: <ul style="list-style-type: none"> • Pencil • ELECTRICAL LEGEND • Blueprint Section • Electrical Supplies Order Form • Schematic Drawing (BEDROOM 1) 	

OALCF Tasks for the Apprenticeship Goal Path: Prepared for the Project, *Developing Best Practices for Increasing, Supporting and Retaining Apprentices in Northern Ontario (2014)*

Task Title: Interpret and Create Drawings

Electricians interpret, modify and create schematic drawings using standardized icons and legends. They use the drawings to plan tasks and determine materials needed for a job.

Use the following ELECTRICAL LEGEND, Blueprint Section, Electrical Supplies Order Form and Schematic Drawing (BEDROOM 1), to complete the tasks.

Learner Information and Tasks:

Task 1: Interpret the ELECTRICAL LEGEND and Blueprint Section to complete the following tasks.

- a) How many switches are required for bedroom #2?





















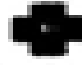

- b) What is the electrical apparatus over the sink?

Task 2: The electrician orders supplies. Use the ELECTRICAL LEGEND and the Blueprint Section to decide what electrical supplies are needed for the Bathroom and 2 Bedrooms. Complete the Electrical Supplies Order Form.

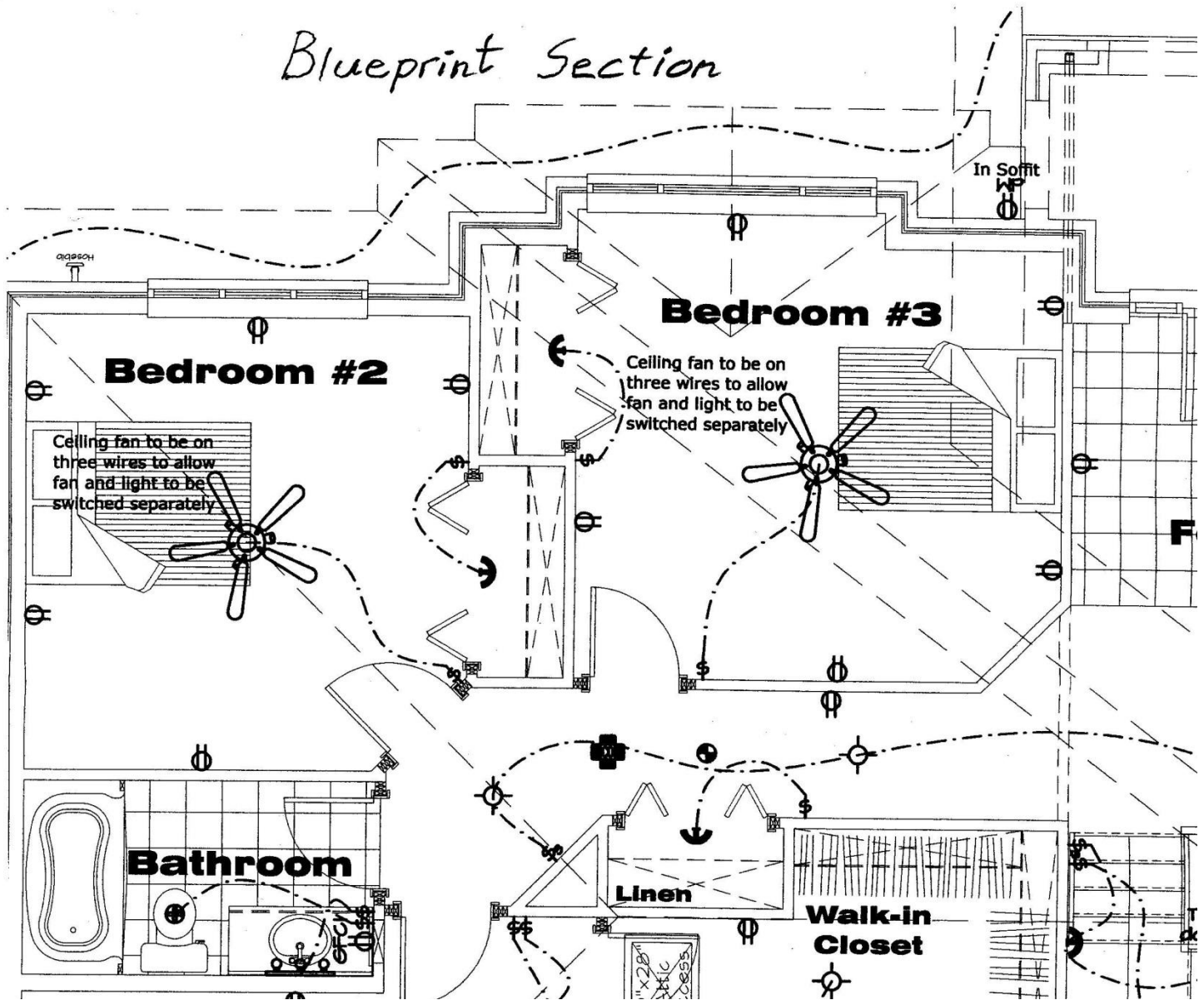
Task 3: Refer to the icons of the ELECTRICAL LEGEND to draw the electrical apparatuses, as per the directions, on the bedroom diagram.

- a) Switch for overhead light on west wall near door
- b) Overhead light centered in room
- c) Pull cord light switch in closet centred between sliding doors
- d) 2 duplex receptacles on each of south and east walls
- e) 1 duplex receptacle on north wall

OALCF Tasks for the Apprenticeship Goal Path: Prepared for the Project, *Developing Best Practices for Increasing, Supporting and Retaining Apprentices in Northern Ontario (2014)*

ELECTRICAL LEGEND	
	Pull cord light switch
	Ceiling mounted light fixture
	Potlight
	Hall mounted light fixture
	Bar light fixture
	Switch
	Three way switch
	Four way switch
	Ventilation fan switch
	Duplex receptacle
	Split receptacle
	Ground fault circuit interrupter
	Weatherproof receptacle
	220v receptacle
	Phone jack
	Cable outlet
	Central vacuum outlet
	Special Receptacle
	Exhaust fan
	Interconnected a.c. smoke alarm
	Carbon Monoxide detector
	Thermostat/circulation fan

OALCF Tasks for the Apprenticeship Goal Path: Prepared for the Project, *Developing Best Practices for Increasing, Supporting and Retaining Apprentices in Northern Ontario (2014)*

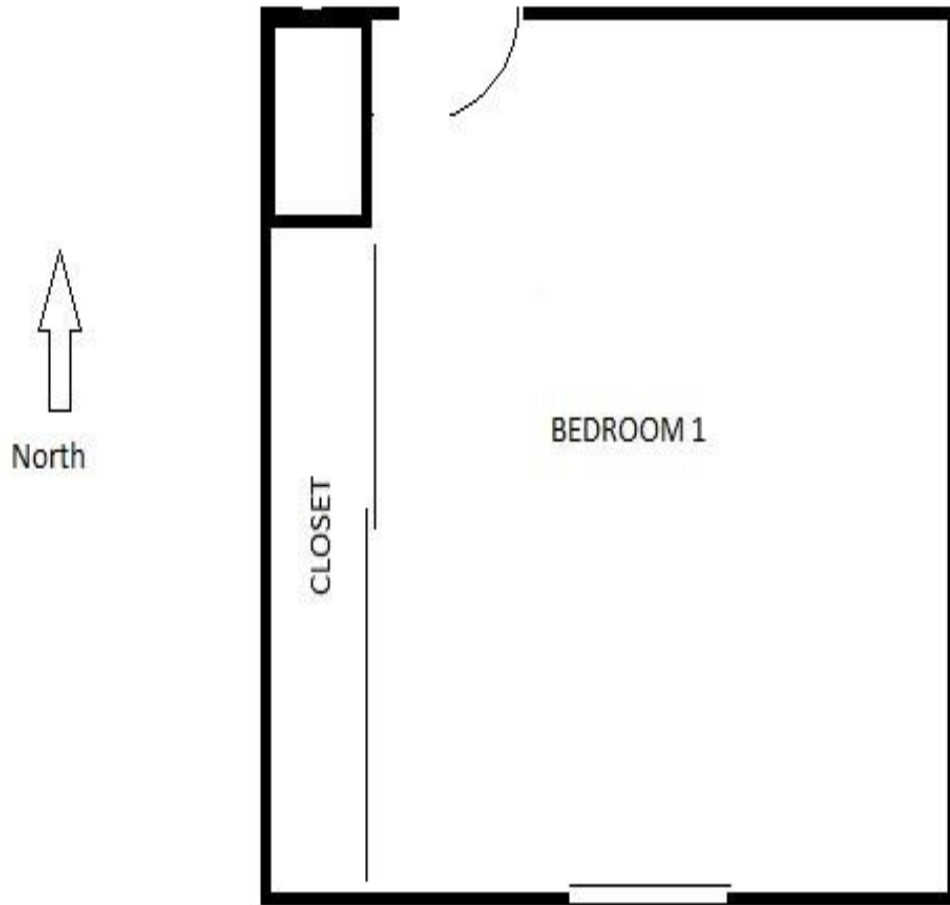


OALCF Tasks for the Apprenticeship Goal Path: Prepared for the Project, *Developing Best Practices for Increasing, Supporting and Retaining Apprentices in Northern Ontario (2014)*

Electrical Supplies Order Form	
Item	No. Requested
Pull cord light switch	
Ceiling mounted light fixture	
Potlight	
Bar light fixture	
Switch	
Three way switch	
Ventilation fan switch	
Duplex receptacle	
Split receptacle	
Ground fault circuit interrupter (GFCI)	
Weatherproof receptacle	
220v receptacle	
Phone jack	
Cable outlet	
Exhaust fan	
Interconnected smoke alarm	
Carbon Monoxide detector	
Thermostat/circulation fan	
Other	

OALCF Tasks for the Apprenticeship Goal Path: Prepared for the Project, *Developing Best Practices for Increasing, Supporting and Retaining Apprentices in Northern Ontario (2014)*

Bedroom Diagram



OALCF Tasks for the Apprenticeship Goal Path: Prepared for the Project, *Developing Best Practices for Increasing, Supporting and Retaining Apprentices in Northern Ontario (2014)*

Task Title: Interpret and Create Drawings

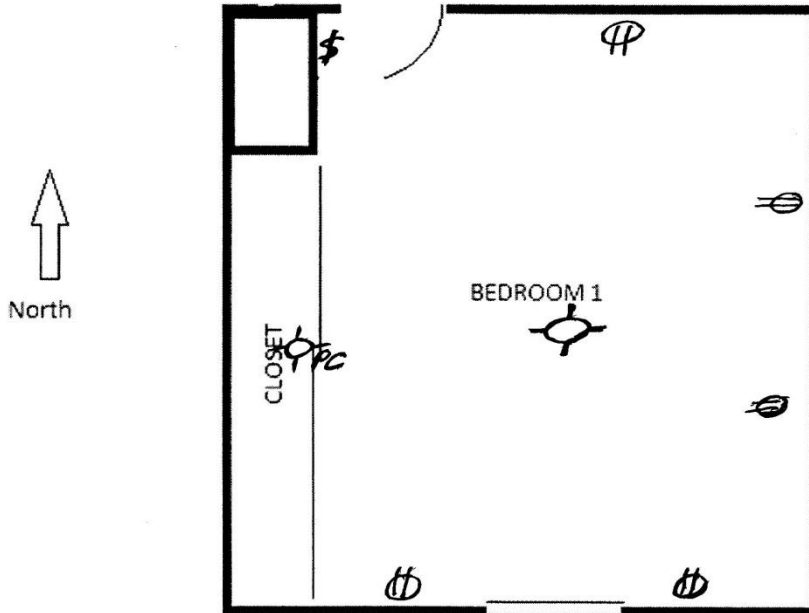
Answer Key

- Task 1:**
- a) Scan the ELECTRICAL LEGEND to locate icon for switch. Find the switch icons in Bedroom #2 on the Blueprint Section diagram. Count the switches. **2 switches.**
 - b) Locate the Bathroom on the Blueprint Section. Find the sink. Match the fixture over the sink with an icon on the ELECTRICAL LEGEND. The electrical apparatus over the sink is a **Bar light Fixture.**
- Task 2:** Scan the 2 Bedrooms and Bathroom on the Blueprint Section and match the symbols on the ELECTRICAL LEGEND. Count the number of times each symbol is shown in the prescribed rooms and record these totals on the Electrical Supplies Order Form. **Note: the items listed in Other are not necessary.**

Electrical Supplies Order Form	
Item	No. Requested
Pull cord light switch	
Ceiling mounted light fixture	
Potlight	
Bar light fixture	1
Switch	6
Three way switch	
Ventilation fan switch	
Duplex receptacle	11
Split receptacle	
Ground fault circuit interrupter (GFCI)	1
Weatherproof receptacle	
220v receptacle	
Phone jack	
Cable outlet	
Exhaust fan	1
Interconnected smoke alarm	
Carbon Monoxide detector	
Thermostat/circulation fan	
Other	2 fans, 2 sconces

OALCF Tasks for the Apprenticeship Goal Path: Prepared for the Project, *Developing Best Practices for Increasing, Supporting and Retaining Apprentices in Northern Ontario (2014)*

Task 3:



OALCF Tasks for the Apprenticeship Goal Path: Prepared for the Project, *Developing Best Practices for Increasing, Supporting and Retaining Apprentices in Northern Ontario (2014)*

Task Title: Interpret and Create Drawings

Performance Descriptors		Needs Work	Completes task with support from practitioner	Completes task independently
A2.2	<ul style="list-style-type: none"> performs limited searches using one or two search criteria 			
	<ul style="list-style-type: none"> extracts information from tables and forms 			
	<ul style="list-style-type: none"> uses layout to locate information 			
	<ul style="list-style-type: none"> makes connections between parts of documents 			
	<ul style="list-style-type: none"> makes low-level inferences 			
A2.3	<ul style="list-style-type: none"> performs complex searches using multiple search criteria 			
	<ul style="list-style-type: none"> integrates several pieces of information from documents 			
	<ul style="list-style-type: none"> compares or contrasts information between two or more documents 			
	<ul style="list-style-type: none"> uses layout to locate information 			
	<ul style="list-style-type: none"> identifies the purpose and relevance of documents 			
	<ul style="list-style-type: none"> makes inferences and draws conclusions from information displays 			
	<ul style="list-style-type: none"> identifies sources, evaluates and integrates information 			
B2.1	<ul style="list-style-type: none"> writes simple texts to request, remind or inform 			
	<ul style="list-style-type: none"> conveys simple ideas and factual information 			
	<ul style="list-style-type: none"> demonstrates a limited understanding of sequence 			

OALCF Tasks for the Apprenticeship Goal Path: Prepared for the Project, *Developing Best Practices for Increasing, Supporting and Retaining Apprentices in Northern Ontario (2014)*

	<ul style="list-style-type: none"> uses highly familiar vocabulary 			
B3.2a	<ul style="list-style-type: none"> uses layout to determine where to make entries 			
	<ul style="list-style-type: none"> begins to make some inferences to decide what information is needed, where and how to enter the information 			
	<ul style="list-style-type: none"> makes entries using a limited range of vocabulary 			
	<ul style="list-style-type: none"> follows instructions on documents 			
B3.3a	<ul style="list-style-type: none"> uses layout to determine where to make entries 			
	<ul style="list-style-type: none"> makes inferences to decide what, where and how to enter information 			

This task: was successfully completed ____ needs to be tried again ____

Learner Comments

Instructor (print)

Learner Signature