



Task Title: Calculate the Area of an Irregular Room

OALCF Cover Sheet – Practitioner Copy

Learner Name: _____

Date Started: _____

Date Completed: _____

Successful Completion: Yes No

Goal Path: Employment Apprenticeship

Secondary School Post Secondary Independence

Task Description: The learner will use a floor plan of an irregular room to determine if specific pieces of furniture will fit.

Main Competency/Task Group/Level Indicator:

- Understand and Use Numbers/Use measures/C3.3

Materials Required:

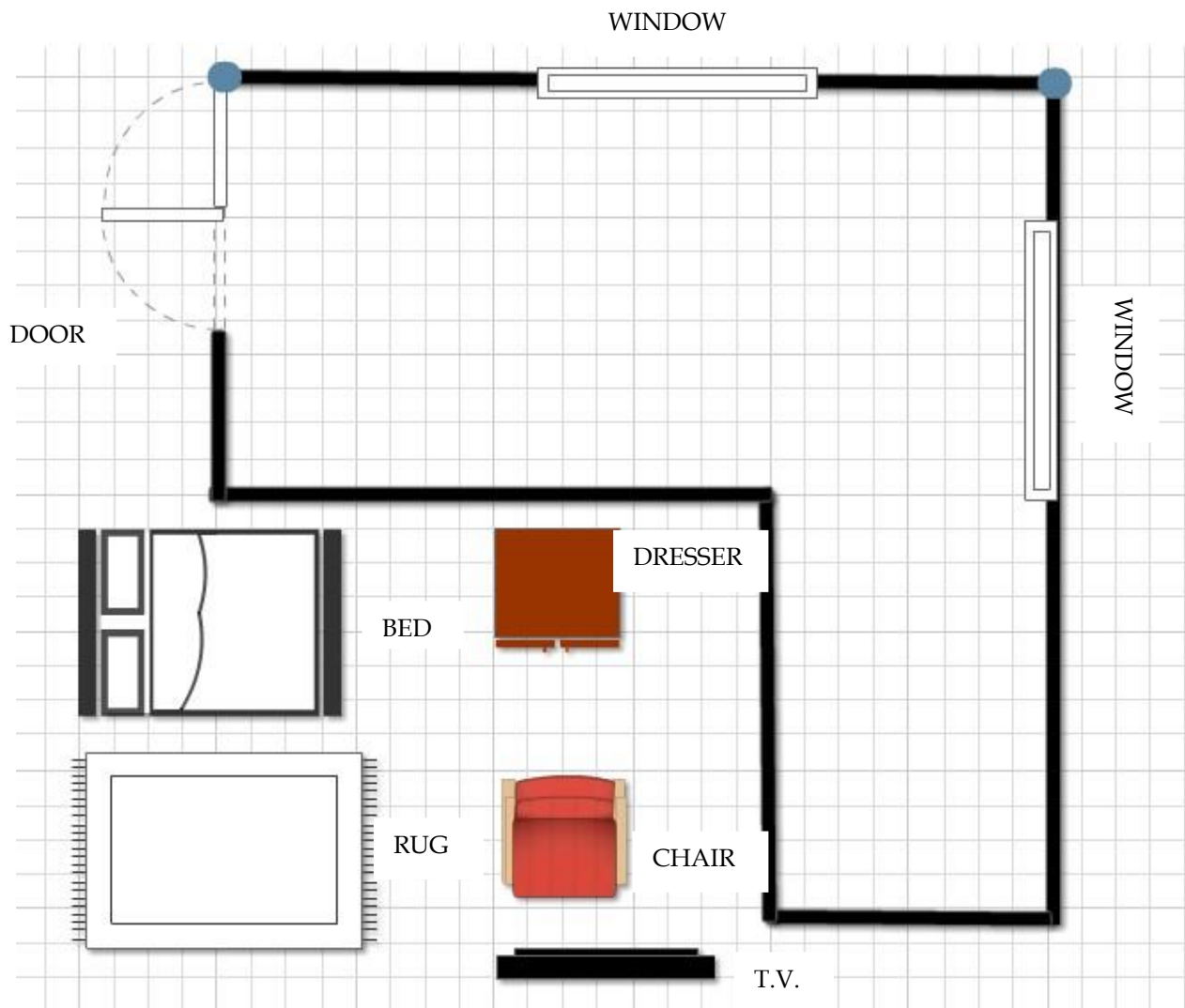
- Pen/pencil and paper and/or digital device
- Calculator or digital device with calculator function
- Ruler

Learner Information

Floor plans are often used to determine where to place furniture in a room.

Scan the "Bedroom Floor Plan". In the floor plan each small square represents 1 foot squared (1 foot x 1 foot x 1 foot x 1 foot).

Bedroom Floor Plan



Work Sheet

Task 1: Calculate in feet the perimeter of the bedroom.

Answer:

Task 2: Calculate in feet the total area of the bedroom.

Answer:

Task 3: Calculate in feet the total approximate amount of the room taken up by windows.

Answer:

Task 4: Use the floor plan to record the placement you've decided on for each piece of furniture shown.

Answer: No written response required here.

Task completed: Yes:

Answers

Task 1: Calculate the perimeter of the bedroom in feet.

Answer: $24 + 24 + 8 + 12 + 16 + 12 = 96$ feet

Task 2: Calculate the total area (in feet) of the bedroom.

Answer:

$$12 \times 24 = 288$$

$$12 \times 8 = 96$$

$$288 + 96 = 384 \text{ square feet}$$

Task 3: Calculate the total approximate amount of the room (in feet) taken up by windows.

Answer: $8 + 8 = 16$ feet

Task 4: Use the floor plan to record the placement you've decided on for each piece of furniture shown.

Answers will vary but will reflect that the learner understands that the size of the furniture is represented by the floor plan grid.

Performance Descriptors

Levels	Performance Descriptors	Needs Work	Completes task with support from practitioner	Completes task independently
C3.3	calculates using numbers expressed as whole numbers, fractions, decimals, percentages and integers			
	understands and uses formulas for finding the perimeter, area and volume of non-rectangular, composite shapes			
	manages unfamiliar elements (e.g. context, content) to complete tasks			
	makes estimates involving many factors where precision is required			
	chooses and performs required operations; makes inferences to identify required operations			
	selects appropriate steps to solutions from among options			
	identifies a variety of ways to complete tasks			

Task Title: CalculateAreaOfIrregularRoom_I_C3.3

Levels	Performance Descriptors	Needs Work	Completes task with support from practitioner	Completes task independently
C.3	represents measures using whole numbers			
	uses strategies to check accuracy (e.g. estimating, using a calculator, repeating a calculation, using the reverse operation)			

This task: Was successfully completed Needs to be tried again

Learner Comments:

Instructor (print):

Learner (print):
